

Cleanflo
Water Technologies Inc

Product Offerings

Commercial

Condominium

Multi - Family

High Rise

Agriculture

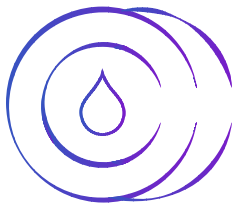
Hospital

School



**Canadian Leader Manufacturing Water
Reuse And Water Treatment Technologies**

www.cfwat.ca



Cleanflo
Water Technologies Inc

Available across Canada



Contents

About us	4
Comprehensive Product Lines	5
Services	6
Vida One Water Reuse	8
Rainseeker	14
Cleanflo Controls and Automation	20
Sanitas Potable Water System	26



About Us

Established in 2015, **Cleanflo Water Technologies Inc.** is a Canadian water system manufacturer dedicated to revolutionizing water management through innovative and sustainable solutions. Our core focus is on manufacturing cutting-edge water technology that enables water reuse and ensures the production of potable water. With a dedicated controls and automation division, we provide fully automated solutions that seamlessly integrate with your water systems.

As a certified UL 508A Industrial Control Panel shop, we excel in in-house automation and control systems, ensuring a reliable and efficient operation. Our commitment to environmental responsibility drives us to continuously develop and improve our technologies for a more sustainable future.

↑ Picture Taken By Cleanflo 2022 of Cleanflo System



Experience

Cleanflo has been active in the market since 2015.



Product

Cleanflo uses products rated above industry standard.



Knowledge

Cleanflo has a strong knowledge base built on experience, training, research, and professional associations.



Vision

Cleanflo is a Canadian manufacturer of water technologies with the capabilities to support our clients from concept to build to maintenance. Continued emphasis on innovation and development will bring the best water solutions to the Canadian market. **Cleanflo** will continue to grow based on the following standards:



Suppliers

Cleanflo values its relationships with all its suppliers.



Professionalism

Cleanflo combines experience and knowledge to invest in customer satisfaction.



Originality

Cleanflo is an industry innovator with first mover advantage.



Customers

Cleanflo will work closely with commercial customers throughout Canada.

Comprehensive Product Lines

At **Cleanflo**, we offer four distinct product lines designed to provide comprehensive water solutions for your building or project:

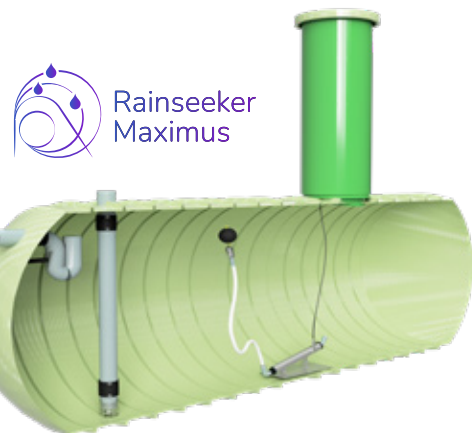
Vida One Water Reuse

This complete line of pumping, treatment, and control systems is designed to reuse various types of onsite water for non-potable purposes in commercial buildings. Save resources and reduce costs with our advanced water reuse technology.



Rainseeker Maximus

This comprehensive collection system is ideal for harvesting rainwater and stormwater, storing it safely for later reuse. Ensure a sustainable water source for your project with our **Rainseeker Maximus systems**.



Sanitas Potable Water Systems

This fully automated treatment systems are used for both final treatment of city water and full treatment of well or surface water. Trust **Sanitas** to deliver safe and clean potable water for your needs.



Cleanflo Controls and Automation

Offering both services and finished UL508A listed control panels, all built in Canada in a UL certified panel shop. Whether you need pre-built or custom control systems, **Cleanflo** expertise ensures reliable and efficient operation.



Services

Cleanflo goes beyond product manufacturing to offer a full suite of services to support your project at every stage. In-house services include:



Manufacturing

We manufacture high-quality water systems and control panels tailored to your specifications.



3D Modeling

We use cutting-edge technology to create 3D models of your water systems, ensuring precise planning and installation.



Flow Diagram and P&ID

Detailed flow diagrams and P&ID (Piping and Instrumentation Diagrams) are prepared to guide the implementation of your water systems.



Installation

We offer complete professional installation of our systems all across Canada when required. A turn-key solution for your project.



Install Supervisor

We have flexible options for installation. We can provide a supervisor onsite for installation support to your team or contractors.



Onsite Commissioning

Our expert technicians are ready to be onsite, ensuring the successful initiation and commissioning of your new water system.



Tank Sizing

We can provide a detailed calculation on tank sizing based on historical weather data and your project specifics so we can determine the ideal tank size for you.



Existing Building Audit

We can review plans or audit your existing building onsite to help develop a realistic design and implementation plan for any of our water technologies.



Water Quality Testing

We can provide water sampling and quality testing to determine what is in your water for design purposes or for ongoing quality control.

Design Assist - Tendering Packages



Design Engineering Consultation

Our experienced team offers consultation to design the most effective water solution for your project.



Written Specifications

We provide comprehensive written specifications to ensure that your project meets the highest standards.



Submittal Packages

Our detailed submittal packages facilitate a smooth approval process for your project.

Ongoing After Sales Technical Support and Service

Our commitment to your satisfaction extends beyond the initial purchase and installation of our products. We provide continuous phone, email, and video-chat technical support to ensure the optimal performance of your system. For those who require on-site assistance, we offer both on-demand and annual service package options.



Digital Brochure >



Digital Catalog >

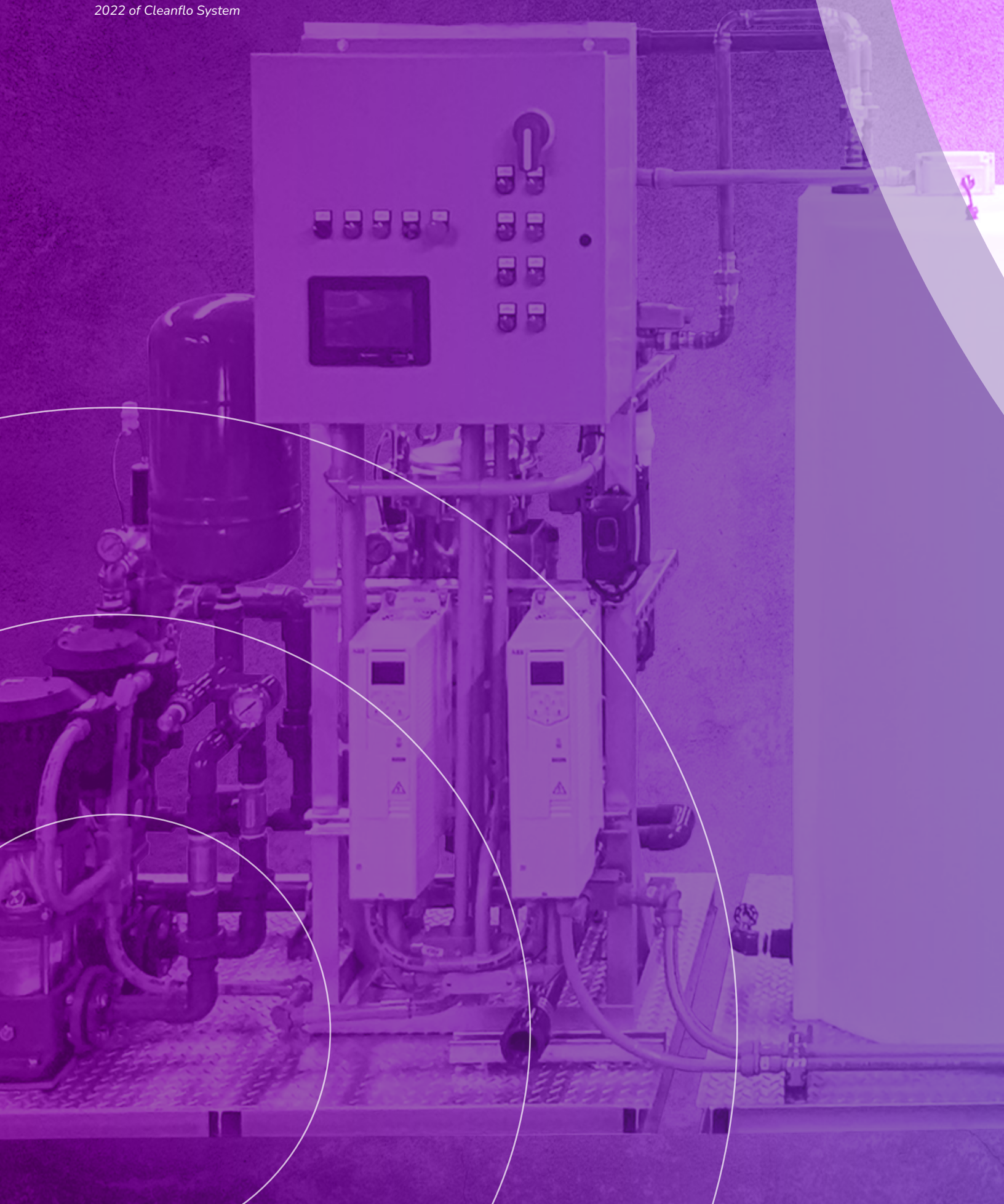
Contact Us Today

Discover how **Cleanflo Water Technologies Inc.** can transform your water management and conservation efforts. Our team is ready to support your project from concept to ongoing maintenance. **Contact us** today to explore the possibilities of our innovative water solutions. Visit our website at **www.cfwat.ca** or call us at **877.306.2146** to schedule a consultation. **Join us** in creating a sustainable and water-efficient future.

Cleanflo Water Technologies Inc.

Leading the Way in Sustainable Water Solutions

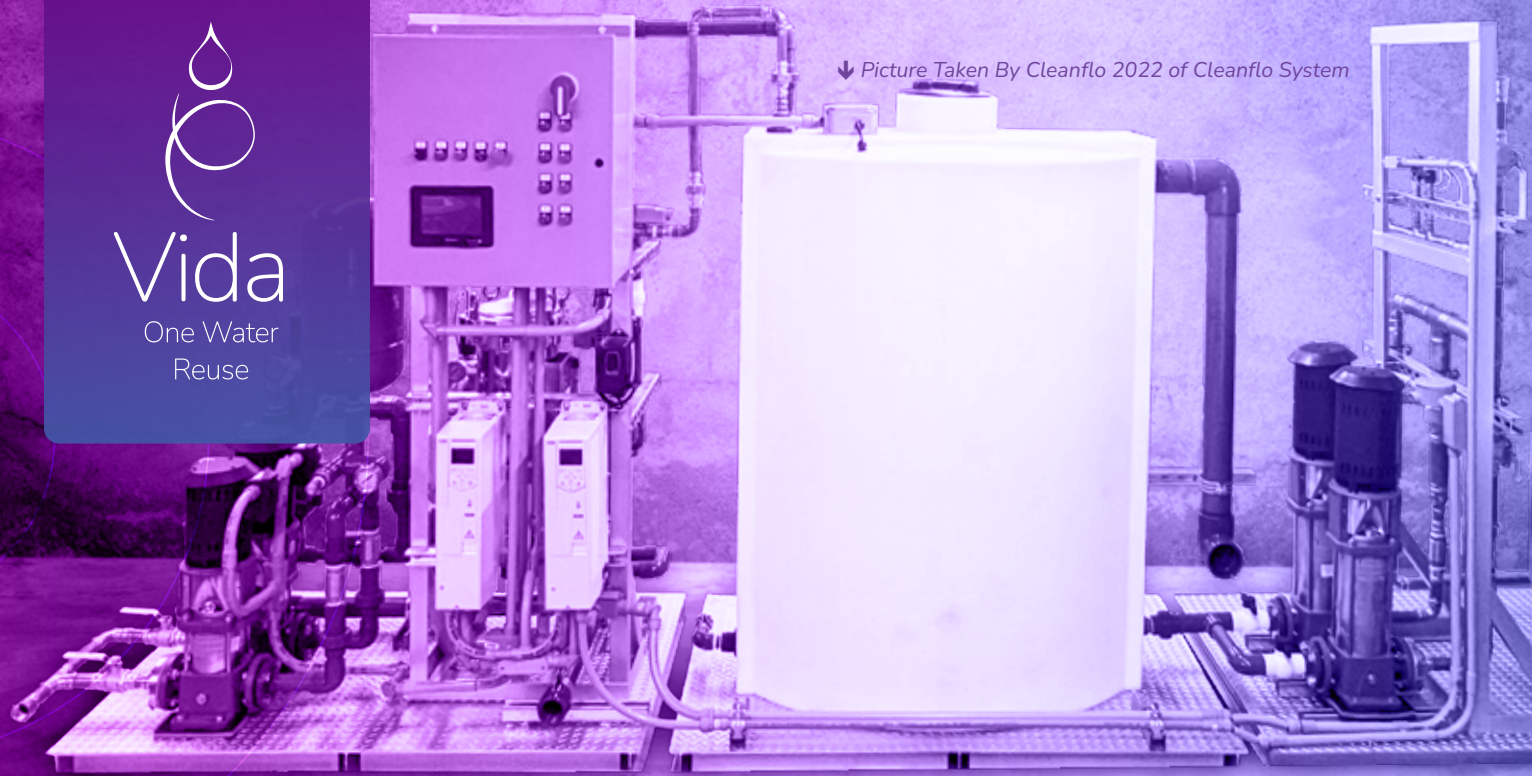
↓ Picture Taken By Cleanflo
2022 of Cleanflo System



The background image shows industrial equipment for water reuse, including a large white storage tank on the left and a complex system of pipes, valves, and a vertical pump assembly on the right. The entire image is overlaid with a semi-transparent purple gradient. Two large, stylized, overlapping teardrop shapes are drawn over the equipment: one in pink and one in blue. The pink teardrop is positioned higher and to the right, while the blue one is lower and more central. The blue teardrop has a white outline and contains a small white circle at its base.

// PRODUCT LINE

Vida One Water Reuse



Onsite Water Sources: Rainwater, Stormwater, Grey Water, Foundation Drainage, AC Condensate, Process Water

Unlocking Water Sustainability for a Greener Tomorrow

1 Accumulation of Onsite Water

- Rainwater
- Stormwater
- Foundation Drainage
- Grey Water
- AC Condensate
- Process Water (IE: Carwash)

2 Store Water in a Tank (Above or below ground)

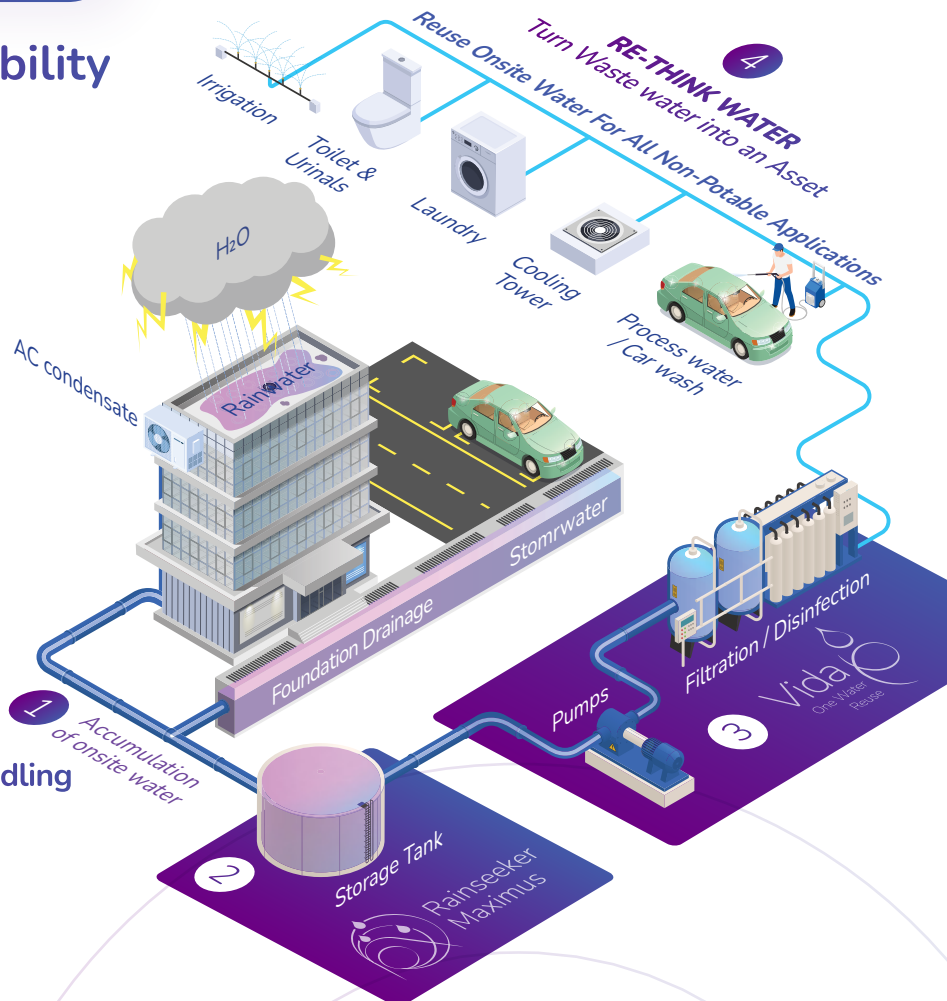
- Rainseeker Maximus System
- Third-Party or Existing Tank

3 Pump, Treat and Control

- Vida One Water Reuse

4 Reuse Non-Potable Water In Your Building

- Irrigation
- Toilets and Urinals
- Laundry
- Cooling Tower Makeup
- Process water / Car wash



Why Vida One Water Reuse?

1. Comprehensive Solutions

Our **Vida One Water Reuse** line offers holistic solutions tailored for various types of onsite water, ensuring it can be safely repurposed for non-potable purposes within your commercial establishment. From rainwater harvesting to carwash reuse, we've got you covered.

2. Resource Efficiency at Its Best

By adopting our advanced water reuse technology, you not only save precious water resources but also cut down on operational costs. **Cleanflo's** systems are engineered for efficiency, helping you maximize your sustainability efforts while minimizing your expenses.



→ 3D Render By
Cleanflo 2023



Fully customizable
modular system



Single point
power connection



Skid mounted
and factory wet tested



HMI colour
touch screen display



Connectivity
IoT, Web, BAS, BACnet



System startup, owners
training, technical support



Status/Alarm remote
monitoring plans available



Maintenance service
plans available

Cleanflo is at the forefront of innovation and responsibility, introducing the **Vida One Water Reuse** product line, a comprehensive range of cutting-edge pumping, treatment, and control systems meticulously designed to revolutionize the way commercial buildings manage their water resources. With a deep-rooted belief that "Water is Life," our mission extends beyond providing efficient water management solutions. We embrace a holistic approach to water conservation and sustainability, recognizing that water plays a profound role in our lives. Our commitment to holistic water management aligns perfectly

with the principles of "Valuing All Water." We prioritize water conservation, employ advanced technology to prevent loss, and focus on delivering economic, environmental, and social benefits. Our systems approach ensures comprehensive solutions by considering the entire water cycle and infrastructure systems, not just isolated components.

Our adaptable solutions are tailored to various scales, whether for large cities or small utilities, demonstrating our commitment to meeting the unique needs of each client efficiently.



↓ Picture Taken By Cleanflo
2022 of Cleanflo System

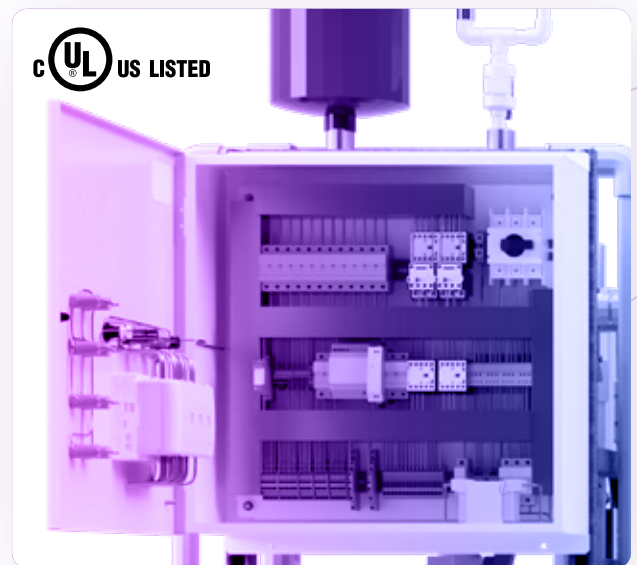


Unmatched Solutions for Rainwater Harvesting and Stormwater Reuse

At **Cleanflo**, we understand that every drop counts. That's why our pre-designed and tender-ready systems seamlessly integrate into new builds or retrofit into existing structures. Whether you seek to harness rainwater for irrigation, toilet flushing, laundry, cooling tower makeup, or any other application, **Cleanflo** has the perfect solution tailored to your specific needs.

Preserving Water, Preserving Our Future

We recognize water as a finite and invaluable resource. Our mission is to design and manufacture eco-friendly systems that contribute significantly to the preservation of this vital asset. **Cleanflo** offers a comprehensive portfolio that includes two seamlessly integrated systems for complete rainwater harvesting or stormwater reuse solutions **Vida** and **Rainseeker**.



UL 508A Certified Control Panel

Why Reuse Water

1. Adhere to local codes and bylaws by incorporating water reuse.
2. Achieve certification in LEED or ESG through the implementation of water reuse practices.
3. Save Money on your water bill by conserving and reusing water.
4. Foster sustainability in your building by embracing water reuse initiatives.
5. Boost your brand and marketing efforts by showcasing your commitment to environmental responsibility.
6. Mitigate the risk of flooding from rain and stormwater through effective water management.



↓ 3D Render By
Cleanflo 2023

Why Choose Cleanflo?

- Unparalleled expertise in the water reuse industry
- Adherence to the highest industry standards
- Tailored solutions for diverse applications
- Seamless integration into new and existing buildings
- Versatile systems for a range of purposes
- Dedication to eco-friendly designs
- Comprehensive portfolio for tailored solutions
- Reliable technologies that promote water conservation and environmental responsibility
- Make the Smart Choice for Water Sustainability
- Fully customized Solutions

Join us in making a difference. **Choose Cleanflo** as your partner in water sustainable technologies. **Contact us** today to explore our solutions and learn how we can assist you in achieving your water conservation goals. Together, let's create a brighter, more sustainable future for generations to come.

Cleanflo Your Partner in Water Sustainable Technologies

Cleanflo stands as Canada's foremost manufacturer of innovative and reliable water sustainable technologies. Our unwavering commitment to excellence and environmental responsibility sets us apart. We take immense pride in adhering to the highest industry standards, including the Canadian Plumbing Code and CSA B805 Rainwater Harvesting Standard.

↓ Picture Taken By Cleanflo
2022 of Cleanflo System





// PRODUCT LINE

Rainseeker Maximus



Rainseeker
Maximus



↑ Picture Taken By Cleanflo
2022 of Cleanflo System

Above Ground:

Polyethene, Steel, Fibreglass



**Polyethene
Above Ground
Slim Line Tank**
(500 L - 1,800 L)



**Polyethene
Above Ground
Low Profile Tank**
(500 L - 9,500 L)



**Polyethene Above
Ground Vertical Tank**
(400 L - 40,000 L)



**Steel Above Ground
Vertical Tank**
(4,000 L - 400,000 L)

Rainseeker Maximus

Your Ultimate Rainwater and Stormwater Collection Solution

Unlock the power of nature with the **Rainseeker Maximus** Plug n Play Rainwater Collection System! Designed for seamless integration with any building, this rainwater harvesting system harnesses the abundant resource of rainwater to meet your water needs. With its cutting-edge technology, the **Rainseeker Maximus** ensures a maintenance-free rainwater collection experience. Say goodbye to the hassle of cleaning your rainwater tank and hello to a sustainable water source that's suitable for any purpose.

Cleanflo Rainwater Harvesting System

A Proactive Approach to Water Quality

Our **Rainseeker Maximus** system employs a proactive preventive approach to ensure the highest water quality. By reducing initial contaminants in the rainwater, we eliminate the need for extensive retroactive treatment, making rainwater an economical and sustainable choice.

Why RainSeeker?

- Canada's Most Popular Rainwater Harvesting Tank
- Centralized rainwater collection System
- Integrates with all buildings types
- Multiple Installation Options



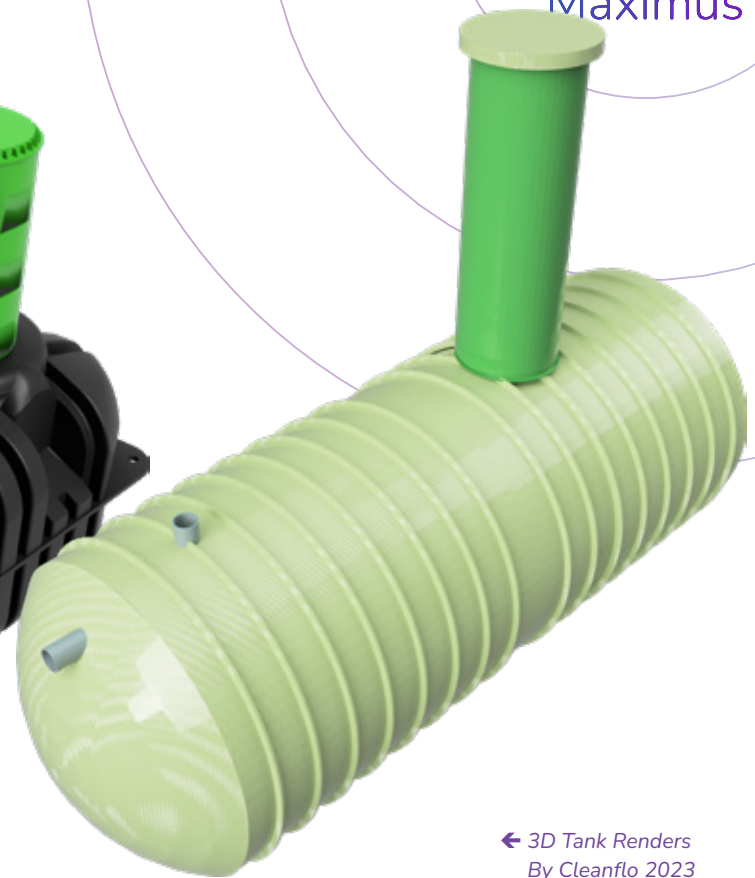
Rainseeker
Maximus

Below Ground:

Polyethene, Fibreglass



Polyethene Below Ground Tank
(1,200 L - 6,700 L)



Fibreglass Above / Below Ground Tank
(4,000 L - 200,000 L)

← 3D Tank Renders
By Cleanflo 2023



1 Pre-filtration

The first line of defense, our self-cleaning pre-filter removes solid particles and aerates the water, reducing contaminants. Maintenance is minimal, with a simple rinse a few times a year.



2 Integrated Rainwater Storage Tank

Our above and below-ground tanks are designed for easy maintenance, creating a perfect environment for water quality while reducing contamination.



3 Calming Inlet

Prevent turbulence and agitation of biofilm at the tank's bottom, ensuring a clean water supply.



4 Floating Filter

Positioned just below the water's surface, this filter maintains the highest water quality without clogging.



5 Skimming Overflow and Backflow Device

Safeguard your system from overflows and prevent debris and rodents from entering the tank.



Rainseeker
Maximus

↓ Picture Taken By Cleanflo
2022 of Cleanflo System



How to create a complete Rainwater or Stormwater Harvesting System

Rainwater/Stormwater Harvesting
Two Technologies, One Goal

Rainwater Collection Rainseeker Maximus

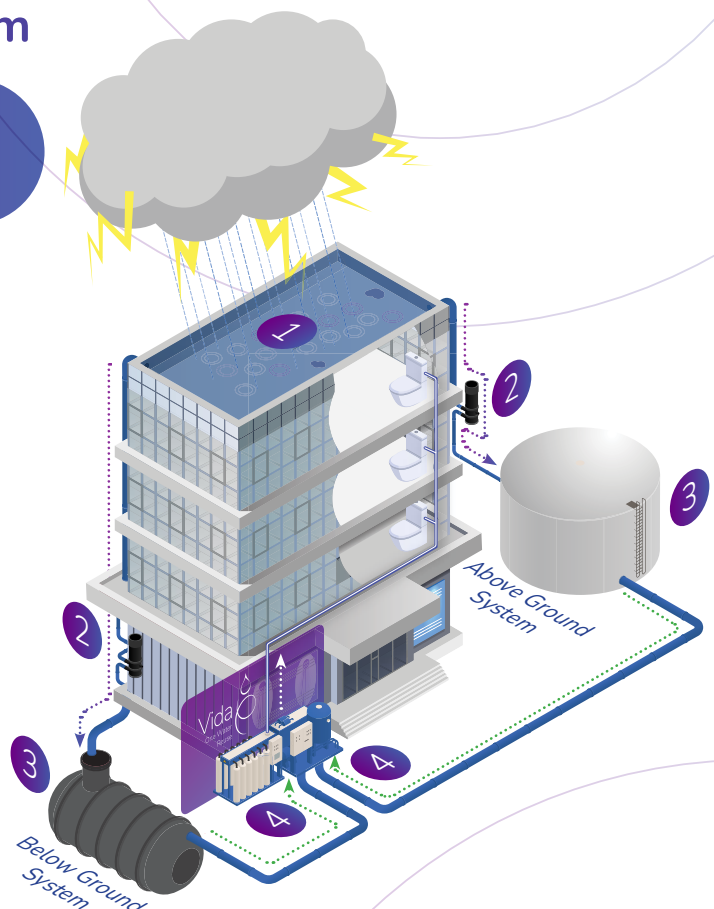
Embrace the art of collecting rainwater and storm water with an engineered system from **Cleanflo**.

- 1 Collect
- 2 Pre-Filter
- 3 Store

Pumping and Treatment Vida One Water Reuse

Pump, Filter and Control your stored rainwater to make it safe for a variety of uses for non-potable purposes in your building.

- 4 Re-Use



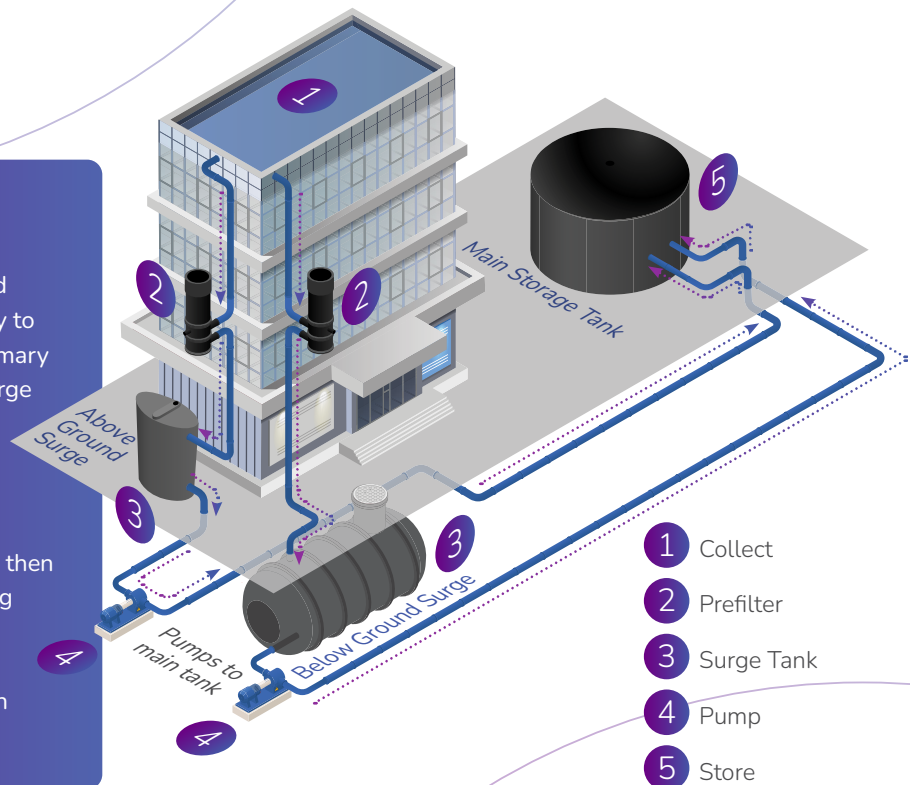


Rainseeker
Maximus

Special Features

Surge System

The rainwater surge system redefines rainwater and stormwater management, providing an efficient way to collect precipitation centrally and pump it to the primary storage tank. This approach reduces the need for large pipes, saving costs and streamlining infrastructure. Traditionally, gravity flow systems are used for rainwater and stormwater collection, but they have limitations in optimizing water collection. The surge system strategically collects water near downpipes, then uses pumps to transport it to the main tank, ensuring efficient capture regardless of location. The surge system is versatile, addressing elevation differences by pumping water to higher levels when needed.



↓ Picture Taken By Cleanflo 2022

Storm Detection

Introducing **StormDetection** software by **Cleanflo**: Revolutionizing rainwater recycling and stormwater management.

StormDetection leverages real-time weather data for proactive, efficient control, combining stormwater management with rainwater harvesting to set new environmental and cost standards.

StormDetection redefines how we use rainwater, optimizing reuse, minimizing harmful discharge, and enhancing flood resilience. Its cutting-edge technology analyzes weather forecasts and local data, ensuring tanks are ready for incoming storms. This is accomplished by pumping or draining out enough stored water to allow sufficient space for the incoming storm, preventing flooding, and maximizing rainwater capture.



CONTACT US TODAY to explore the endless possibilities and benefits that **StormDetection** can bring to your projects.



↓ Picture Taken By Cleanflo
2022 of Cleanflo System





// PRODUCT LINE

Cleanflo Controls





Cleanflo
Controls &
Automation



**Elevate Your Control Panel
Solutions with Cleanflo Controls**
Your Premier UL508A Industrial
Control Panel Partner

↑ Picture Taken By Cleanflo
2022 of Cleanflo System

Cleanflo Controls & Automation Your Trusted Partner for UL508A Industrial Control Panels

At **Cleanflo Controls**, we take pride in being your premier destination for **UL508A** Listed industrial control panels. With a relentless commitment to safety and a rigorous adherence to national and local electrical codes, we are dedicated to ensuring that your custom control panel designs not only meet but exceed industry standards in terms of efficiency, reliability, and, above all, safety.

Our Journey to Excellence

Cleanflo Controls embarked on a remarkable journey of growth and expansion. From our modest beginnings, we have evolved into a leading control panel solution provider. Today, we stand tall with a team of dedicated professionals and a state-of-the-art facility. We are excited to open our doors to a broader clientele, offering our expertise to diverse industries across Canada. Our clientele includes manufacturers, agricultural enterprises, high-rise condominiums, offices, retail centers, universities, and many more.



A Vast Toolkit of Solutions

What sets **Cleanflo Controls** apart is our extensive catalog of resources. From a diverse array of vendors to hardware, innovative designs, sophisticated software, and meticulously documented processes, we possess a formidable toolkit that allows us to tailor our solutions to a multitude of

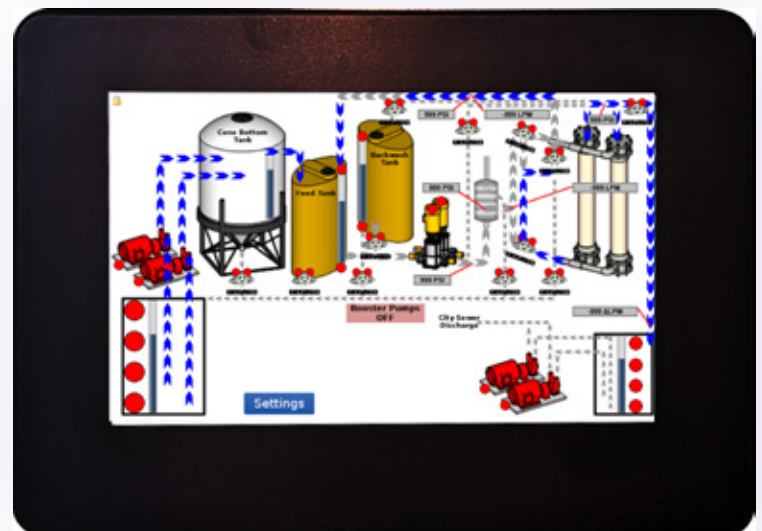
production environments and equipment configurations. Our seasoned team excels in developing and deploying complete, production-ready manufacturing processes. We integrate assembly and production telemetry into modern software stacks and ERP systems.



↑ 3D Render By Cleanflo 2023

A Local Partner with Global Expertise

Cleanflo Controls takes immense pride in supporting local manufacturers, businesses, entrepreneurs, and governments. Our multidisciplinary team brings a wide range of problem-solving skills to the table, along with a toolkit of solutions that can be applied to various products and systems. From conceptualization to design, from research and development to production and beyond, we work closely with our clients to provide expertise at every stage of the process. Our commitment is to continuously improve systems as technologies evolve and as the needs of end-users change.



PLC Programming and UI Design



Cleanflo Controls & Automation

↑ Picture Taken By Cleanflo
2022 of Cleanflo System



UL508A Certification for Safety and Compliance



Our UL508A certification (E504037) stands as a testament to our commitment to safety and compliance. It assures our clients that our control panels meet the stringent electrical safety standards of both the USA and Canada. Whether your requirements involve single or three-phase applications up to 600VAC, you can trust Cleanflo Controls to deliver control panels that ensure the smooth and efficient operation of your equipment and machinery.

PLC Programming Expertise



Benefit from our in-house PLC programming services to tailor your panels to your exact specifications. Our expert programmers utilize the industry-standard IEC-61131 Ladder Diagram to create efficient and reliable code that aligns perfectly with your needs. Whether you require a new panel or modifications to an existing one, our in-house PLC programming services are here to assist you.

Comprehensive Design Process



Our comprehensive design process begins with conceptualization and the development of a sequence of operations. Once approved, we transition to creating a fully 3D design of the entire control panel. This design includes precise wire runs, allowing for the development of a wire cut list. Our attention to detail ensures accuracy and efficiency in every aspect of panel design and construction.

Precision Fabrication



Our control panel fabrication process encompasses everything from design and engineering to fabrication. Cleanflo offers a one-stop solution for all your control panel requirements, utilizing state-of-the-art software and manufacturing techniques to deliver quality and exceptional control panels. For a complete fabrication of UL 508A Listed control panels, look no further than Cleanflo Controls.

Choose Cleanflo Controls for Your Control Panel Needs

At **Cleanflo Controls**, we are your trusted partner for UL508A industrial control panels. **Contact us today** to discuss your project and discover how our expertise can elevate your control panel solutions to new heights. Your success is our mission, and we look forward to being a part of your journey.



Efficient General-Purpose Panels



For those seeking a swift and cost-effective solution, our range of general-purpose panels is ready to be built and promptly delivered. These panels adhere to the same high standards as our custom offerings, ensuring that they not only meet but also exceed your needs and expectations. Efficiency and reliability are our promises.

Tailored Communication Solutions



We understand that different industries demand different communication protocols. Therefore, Cleanflo Controls offers a range of communication stacks, including BACnet MS/TP, BACnet TCP/IP, MODBUS IP, MODBUS RS485, CANbus, REST APIs, and SQL. Whether you have specific requirements or need guidance, our team will design a custom solution that seamlessly integrates with your equipment and machinery.

White Labeling for Brand Visibility



In addition to our custom panel design and build services, we offer white labeling options for OEMs. Collaborate with us to create a custom panel tailored to your specifications, complete with your company logo and branding details. Our white labeling service not only meets your customers' requirements but also promotes your brand identity.

SEE Electrical Software Expertise



At Cleanflo Controls, we leverage SEE electrical software to create smart schematics that seamlessly transition into 3D panels. With fully 3D panels, we can generate complete construction documents and reports, simplifying the fabrication process. Through the Shop Floor application, we ensure that the fabrication of our panels aligns perfectly with the schematic and 3D modeling.

OEM Assembly



As part of our OEM Assembly services, Cleanflo can fully build and UL 508A List your control panels. In conjunction with our white labeling option, we can brand these panels with your company logo or product name, ensuring a seamless and branded solution for your customers.

Production and Assembly Efficiency



We streamline your production and assembly processes by utilizing SEE electrical software to create detailed construction documents and reports. These documents provide a straightforward and efficient path for panel production and assembly. With a comprehensive wire cut list, wires are pre-cut and labeled accurately. A full layout diagram guides the placement of din rail, finger track, and components, ensuring precision. Lastly, the pin-to-pin list guarantees the exact placement and termination of all wires.

↓ Picture Taken By Cleanflo
2022 of Cleanflo System



The background image shows a complex industrial water treatment system. It features various pipes, valves, and large cylindrical tanks. Two prominent tanks in the center have labels that read "NXF". To the left, there are electrical control cabinets. A large, stylized water drop graphic, outlined in pink and filled with a light blue gradient, is superimposed over the right side of the image. The entire image has a purple and blue color overlay.

// PRODUCT LINE

Sanitas

Potable water Systems



Sanitās
Potable Water Systems



Introducing Sanitās Potable Water Products Elevating Water Quality, Safety, and Sustainability

Cleanflo introduces **Sanitās** as extensive line of potable water pumping and treatment systems, designed to meet the most demanding requirements of drinking water systems. With a steadfast commitment to safeguarding the health and well-being of communities, our innovative solutions are engineered to provide clean, safe, and reliable water for consumption, while also emphasizing sustainability and resource efficiency.

Point of Entry Treatment (POE)

Purpose: These advanced systems are strategically installed at the entry point of city water supplies within buildings, offering comprehensive filtration solutions.

Benefits: By delivering high-level filtration, they ensure that city water entering the building meets the most stringent purity standards, safeguarding both health and infrastructure.

Potable Water Treatment Plant

Versatility: Our treatment plants are incredibly versatile and can be tailored to treat well water, lake water, river water, and a multitude of other water sources.

Comprehensive Solution: Designed to meet the unique challenges posed by different source waters, our treatment plants are capable of transforming virtually any water source into potable water, guaranteeing safe and dependable supply.

↓ Picture Taken By Cleanflo
2022 of Cleanflo System



Sānitās
Potable Water Systems

↓ 3D Render By
Cleanflo 2023

A 3D render of a Cleanflo water filtration system. The system consists of four large, light green cylindrical tanks arranged in a row, each with a black top cap. To the right of the tanks is a grey control cabinet with a digital display and several indicator lights. Above the tanks, there are white pipes and two red-handled valves. The entire unit is mounted on a grey base.

Hot Water Recirculation & Cooling Towers Legionella Treatment

Targeted Safety: In hot water recirculation systems, our specialized treatment system effectively disinfects hot water, mitigating the risk of dangerous legionella bacteria formation.

Peace of Mind: Whether in residential, commercial, or industrial settings, our Legionella Treatment solution ensures water safety and compliance with the highest standards of hygiene.

Hot Water Recirculation & Cooling Towers Legionella Treatment

Targeted Safety: In hot water recirculation systems, our specialized treatment system effectively disinfects hot water, mitigating the risk of dangerous legionella bacteria formation.

Peace of Mind: Whether in residential, commercial, or industrial settings, our Legionella Treatment solution ensures water safety and compliance with the highest standards of hygiene.

Hot Water Recirculation & Cooling Towers Legionella Treatment

Targeted Safety: In hot water recirculation systems, our specialized treatment system effectively disinfects hot water, mitigating the risk of dangerous legionella bacteria formation.

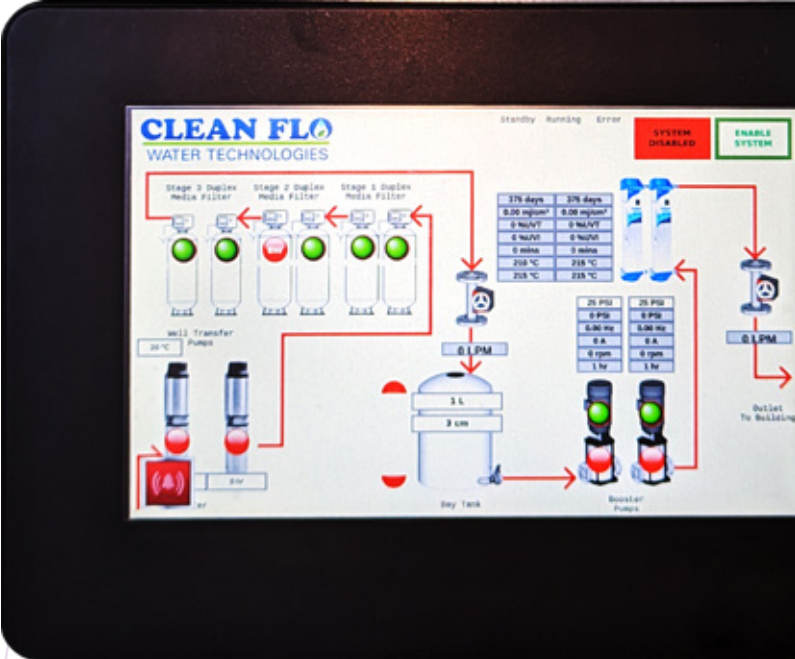
Peace of Mind: Whether in residential, commercial, or industrial settings, our Legionella Treatment solution ensures water safety and compliance with the highest standards of hygiene.

Booster Pump Packages

Unmatched Performance: Our complete booster pump packages are engineered to provide the perfect balance of reliability and performance for a wide range of water booster applications, ensuring consistent water pressure and flow.

Booster Pump Packages

Unmatched Performance: Our complete booster pump packages are engineered to provide the perfect balance of reliability and performance for a wide range of water booster applications, ensuring consistent water pressure and flow.





Sānitās
Potable Water Systems



Advanced Filtration Technologies

- Bag Filters
- Cartridge Filters
- Screen Filters (Backwashing)
- Media Filters (Backwashing)
- Ultra Membranes (Backwashing)
- Nano Membranes (Backwashing)
- Reverse Osmosis

State-of-the-Art Disinfection Technologies

- Ultraviolet Systems
- Chlorine Injection
- Ozone Injection
- Advanced Oxidation Process (AOP)
- Nano Membranes



Fully Integrated Control Systems

Our control systems range from basic single-point power connections to advanced touchscreen interfaces with seamless integration into Building Automation Systems (BAS). This ensures precise control and monitoring, optimizing operational efficiency and resource management.

The **Sanitas** product line is built with a steadfast commitment to excellence in water treatment and purification, setting new benchmarks for water quality, safety, and environmental responsibility. Each of our products undergoes rigorous quality assurance procedures to ensure they consistently meet and exceed industry standards.



Sānitās

Potable Water Systems



Join us in our mission to provide universal access to clean and safe drinking water, while also minimizing the environmental impact of water treatment. Explore our diverse product offerings and experience the Sanitas difference for yourself, where water quality, safety, and sustainability converge. Together, we can make a difference in the world of water purification.





West

Vancouver Main Office

📍 250 - 997 Seymour Street
Vancouver, British Columbia, V6B 3M1
☎ 778 - 200 - 7356

Victoria Satellite Office

☎ 778 - 400 - 5356

✉ sales@cfwt.ca

🌐 www.cfwt.ca

Prairies

Saskatchewan Main Office

📍 329 Dewdney Ave
Regina, Saskatchewan, S4N 0E7
☎ 306 - 988 - 7909

Saskatoon Satellite Office

☎ 587 - 324 - 2356

Calgary Satellite Office

☎ 587 - 324 - 2356

Edmonton Satellite Office

☎ 587 - 402 - 4356

Winnipeg Satellite Office

☎ 204 - 808 - 2356

Central / Atlantic

Toronto Main Office

📍 675 Cochrane Drive, 6th Floor, East
Tower Markham, ON L3R 0B8
☎ 647 - 931 - 3356

Hamilton Satellite Office

☎ 289 - 768 - 8356

Montreal Satellite Office

☎ 514 - 613 - 7356

Halifax Satellite Office

☎ 902 - 702 - 3356